



ECOSYS FS-4200DN



COST COMPARISON

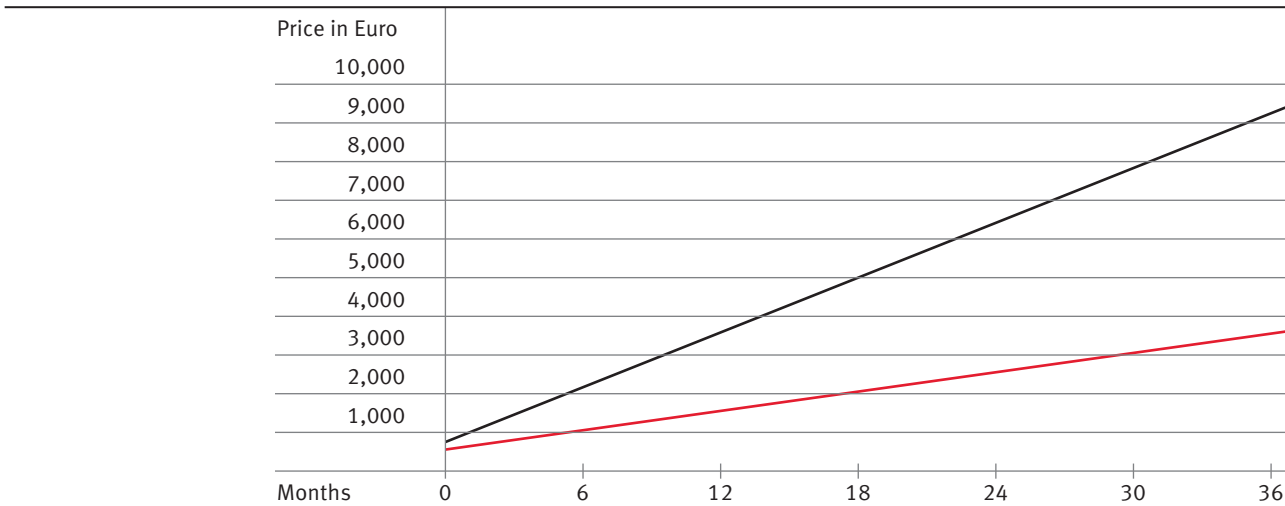
KYOCERA FS-4200DN VS. HEWLETT PACKARD LASERJET ENTERPRISE 600 M602DN

BASIS OF CALCULATION

ALLOCATED DOCUMENT TYPES	PRINT VOLUME	PERIOD
Text only: 100 %	15,000 pages / month	36 months
Mixed documents: 0 %		
Full coverage: 0 %		

TOTAL COSTS

	KYOCERA FS-4200DN	Hewlett Packard Laserjet Enterprise 600 M602DN
Device type		
Purchasing price	810.00 EUR	964.00 EUR
Running costs	2,904.00 EUR	8,366.00 EUR
Total costs	3,714.00 EUR	9,330.00 EUR
Cost savings	5,616.00 EUR	
Print costs per page	0.7 CENT	1.7 CENT



Visit our website to see how our devices compare to our competitors: www.kyoceradocumentsolutions.eu

Capacity data and price information for Germany according to Context World Limited, as of August 2012 and Kyocera Document Solutions Deutschland prices in October 2012. List prices in Euro excluding copyright fee and VAT. The calculation of the toner costs includes the capacity of the starter toner. Costs for the exchange of consumables as well as maintenance (such as labour cost), electricity, print media and financing are not taken into account. The result of the calculation represents mathematically approximated values. Actual usage may produce different results. Errors and omissions excluded. KYOCERA does not guarantee that the information mentioned will be error-free, and it is subject to change without notice.